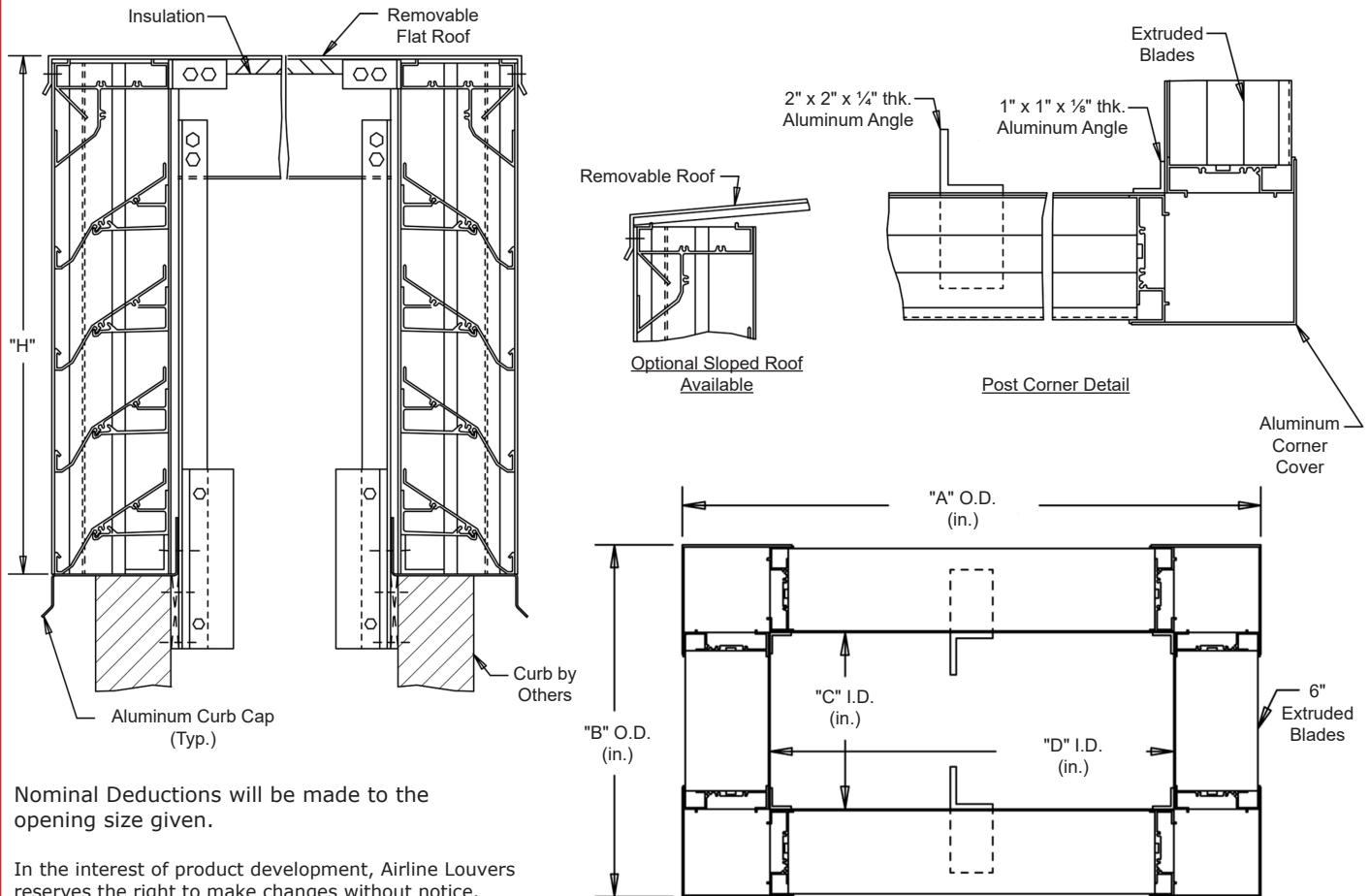


# AS6D45PHP

## Interior Fastening Installation

**ANGLES** - All corners and intermediate to extend from roof into curb.



Continuous angle at the four corners and intermediate as required.

## **STANDARD MATERIALS AND CONSTRUCTION**


**MATERIAL:** .081" thick (nominal) or .125" thick (nominal) extruded aluminum, 6063-T52/T6 alloy, with reinforcing rib bosses.

**ROOF:** .060" thick (nominal) sheet aluminum removable roof, reinforced with aluminum bracing where required to take a snow load of 40 lbs./sq.ft., plus a required safety factor.

**SCREENS:** (When indicated)  
Bird Screen - 1/2" square mesh, 19 GA. galvanized steel, on interior.

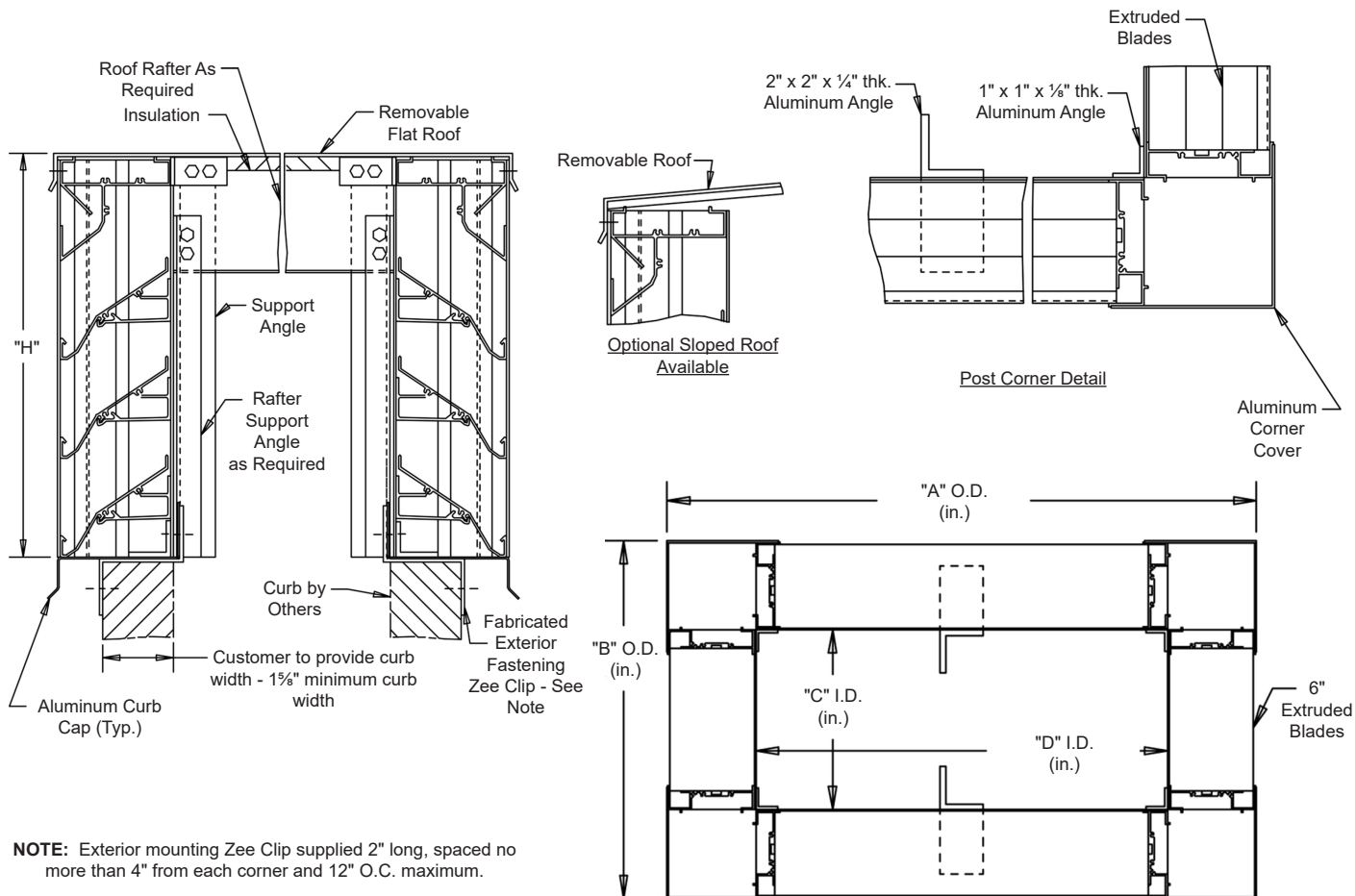
**INSULATION:** Underside of roof is lined with ½" thick insulation.

**NOTES:** Penthouse dimensions "A" or "B" exceeding 84" shall be shipped in sections for field assembly by others.

											
<b>Item #</b>	<b>Qty</b>	A	B	C	D	H	<b>Mullion</b>	Type	Location		
		<b>Penthouse Dimensions</b>						<b>Screens</b>			<b><u>Union Made</u></b>
<b>Arch. / Eng. :</b>						<b>EDR:</b>		<b>ECN:</b>		<b>Job:</b>	
<b>Contractor:</b>											
<b>Project:</b>						<b>Date:</b>		<b>DWN:</b>		<b>DWG:</b>	

## AS6D45PHP

### Exterior Fastening Installation



**NOTE:** Exterior mounting Zee Clip supplied 2" long, spaced no more than 4" from each corner and 12" O.C. maximum.

### STANDARD MATERIALS AND CONSTRUCTION

**MATERIAL:** .081" thick (nominal) or .125" thick (nominal) extruded aluminum, 6063-T52/T6 alloy, with reinforcing rib bosses.

**ROOF:** .060" thick (nominal) sheet aluminum removable roof, reinforced with aluminum bracing where required to take a snow load of 40 lbs./sq.ft., plus a required safety factor.

**SCREENS:** (When indicated)  
Bird Screen - 1/2" square mesh, 19 GA. galvanized steel, on interior.

**INSULATION:** Underside of roof is lined with 1/2" thick insulation.

**NOTES:** Penthouse dimensions "A" or "B" exceeding 84" shall be shipped in sections for field assembly by others.

<b>Item #</b>	<b>Qty</b>	A	B	C	D	H	<b>Mullion</b>	Type	Location		
		<b>Penthouse Dimensions</b>						<b>Screens</b>			
<b>Arch. / Eng. :</b>						<b>EDR:</b>		<b>ECN:</b>		<b>Job:</b>	
<b>Contractor:</b>											
<b>Project:</b>						<b>Date:</b>		<b>DWN:</b>		<b>DWG:</b>	